



## 71 ESTE CANADA

CARMEL, CALIFORNIA

**ESTE CANADA |  
A TEHAMA COMPOUND**

**\$9,900,000**

[TehamaPrivateEstate.com](https://TehamaPrivateEstate.com)



**SCAN ME**

Hold up your phone's  
camera to visit the  
property's website.

Set within Clint Eastwood's Tehama community in Carmel, 71 Este Canada spans 12.32 acres inside one of California's most private and intentionally preserved residential environments. Completed in 2025 and oriented toward uninterrupted ranch land views, the estate is conceived as a modern family compound designed for privacy, longevity, and operational independence. The property totals approximately 4,925 square feet across a main residence, ADU, JADU, and a reimagined barn with guest accommodations and dedicated office and conference space. The main house is defined by scale and light, featuring vaulted wood ceilings, skylights, custom plaster walls, radiant heated hardwood and tile floors, and a stone clad fireplace. The upper level primary suite offers private deck access, spa caliber bath, and walk in closet, while three additional bedrooms and two offices support both daily living and serious work. The ADU functions as a fully independent residence with open kitchen, fireplace, wine storage, outdoor shower, and expansive upper deck. Solar power, dual battery backups, metal roofing, and stone and stucco exteriors reinforce durability and long term relevance. With five garage spaces and access to Tehama's limited 90 homesites across nearly 2,000 acres, 71 Este Canada represents a generational asset built with intention.



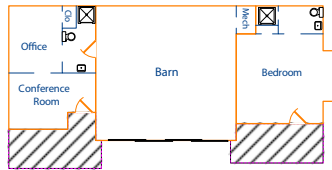
**COLDWELL  
BANKER**

831.214.1990 | DRE#00891159  
[TimAllenProperties.com](https://TimAllenProperties.com)  
[Team@TimAllenProperties.com](mailto:Team@TimAllenProperties.com)



**TIM ALLEN**  
PROPERTIES TEAM

# FLOOR PLAN

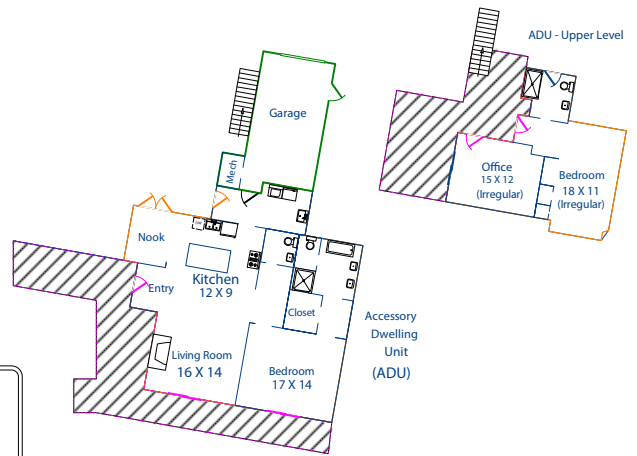
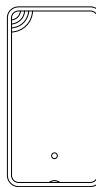
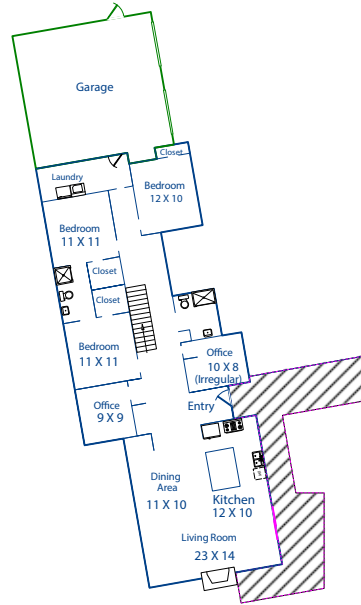
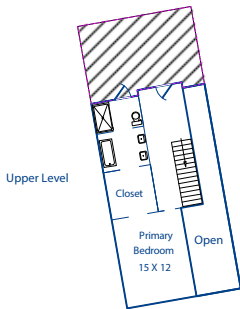


Main Living Area 1st Floor - 1955sf  
Main Living Area Upper Level - 555sf  
 Total - 2510sf  
 Garage - 610sf

Barn - 618sf  
 Barn Bedroom - 326sf  
 Barn Office/Conference - 326sf

ADU 1st Floor - 1323sf  
ADU Upper Level - 561sf

ADU Total - 1884sf  
 ADU Garage - 331sf



This model is for use as a visual tool only. Some measurements are estimates. Therefore, no appraisal value should be inferred.

## SPECIFICS



7 Bedrooms



7 Full, 1 Half Bathrooms



4,925 SqFt



12.32 Acres

Interior:.....Color Infused Plaster

Exterior:.....Stucco, Stone

Fireplace:.....1 Interior, 2 Exterior, 2 ADU

Heat:.....Solar, Radiant, Exchanger

Roof: .....Metal

Floors:.....Hardwood, Tile

Garage .....2 Main House, 1 ADU, 2 Barn

Year Built:.....2025

**2.5% Buyers Brokerage Compensation** | Brokerage Compensation not binding unless confirmed by separate agreement among applicable parties.